

Current Smoking and Prognosis After Acute ST-Segment Elevation Myocardial Infarction

New Pathophysiological Insights

Caroline Haig, PhD,^a David Carrick, MD, PhD,^{b,c} Jaclyn Carberry, BMedSci,^{b,c} Kenneth Mangion, MD,^{b,c} Annette Maznyczka, MD,^{b,c} Kirsty Wetherall, BSc,^a Margaret McEntegart, MD, PhD,^c Mark C. Petrie, MD,^c Hany Eteiba, MD,^c Mitchell Lindsay, MD,^c Stuart Hood, MD,^c Stuart Watkins, MD,^c Andrew Davie, MD,^c Ahmed Mahrous, MD,^c Ify Mordi, MD,^{b,c} Nadeem Ahmed, MD,^{b,c} Vannesa Teng Yue May, MD,^{b,c} Ian Ford, PhD,^a Aleksandra Radjenovic, PhD,^b Paul Welsh, PhD,^b Naveed Sattar, MD, PhD,^b Keith G. Oldroyd, MD(HONS),^{b,c} Colin Berry, MD, PhD^{b,c}

ABSTRACT

OBJECTIVES The aim of this study was to mechanistically investigate associations among cigarette smoking, microvascular pathology, and longer term health outcomes in patients with acute ST-segment elevation myocardial infarction (MI).

BACKGROUND The pathophysiology of myocardial reperfusion injury and prognosis in smokers with acute ST-segment elevation MI is incompletely understood.

METHODS Patients were prospectively enrolled during emergency percutaneous coronary intervention. Microvascular function in the culprit artery was measured invasively. Contrast-enhanced magnetic resonance imaging (1.5-T) was performed 2 days and 6 months post-MI. Infarct size and microvascular obstruction were assessed using late gadolinium enhancement imaging. Myocardial hemorrhage was assessed with T2* mapping. Pre-specified endpoints included: 1) all-cause death or first heart failure hospitalization; and 2) cardiac death, nonfatal MI, or urgent coronary revascularization (major adverse cardiovascular events). Binary logistic regression (odds ratio [OR] with 95% confidence interval [CI]) with smoking status was used.

RESULTS In total, 324 patients with ST-segment elevation MI were enrolled (mean age 59 years, 73% men, 60% current smokers). Current smokers were younger (55 ± 11 years vs. 65 ± 10 years, $p < 0.001$), with fewer patients with hypertension ($52 \pm 27\%$ vs. $53 \pm 41\%$, $p = 0.007$). Smokers had better TIMI (Thrombolysis In Myocardial Infarction) flow grade (≥ 2 vs. ≤ 1 , $p = 0.024$) and ST-segment resolution (none vs. partial vs. complete, $p = 0.010$) post-percutaneous coronary intervention. On day 1, smokers had higher circulating C-reactive protein, neutrophil, and monocyte levels. Two days post-MI, smoking independently predicted infarct zone hemorrhage (OR: 2.76; 95% CI: 1.42 to 5.37; $p = 0.003$). After a median follow-up period of 4 years, smoking independently predicted all-cause death or heart failure events (OR: 2.20; 95% CI: 1.07 to 4.54) and major adverse cardiovascular events (OR: 2.79; 95% CI: 2.30 to 5.99).

CONCLUSIONS Smoking is associated with enhanced inflammation acutely, infarct-zone hemorrhage subsequently, and longer term adverse cardiac outcomes. Inflammation and irreversible myocardial hemorrhage post-MI represent mechanistic drivers for adverse long-term prognosis in smokers. (Detection and Significance of Heart Injury in ST Elevation Myocardial Infarction. [BHF MR-MI]; [NCT02072850](https://doi.org/10.1016/j.jcmg.2018.05.022)) (J Am Coll Cardiol Img 2018; ■:■-■)

© 2018 The Authors. Published by Elsevier on behalf of the American College of Cardiology Foundation. This is an open access article under the CC BY license (<http://creativecommons.org/licenses/by/4.0/>).

From the ^aRobertson Centre for Biostatistics, University of Glasgow, Glasgow, United Kingdom; ^bBritish Heart Foundation Glasgow Cardiovascular Research Centre, Institute of Cardiovascular and Medical Sciences, University of Glasgow, Glasgow, United Kingdom; and the ^cWest of Scotland Heart and Lung Centre, Golden Jubilee National Hospital, Clydebank, United Kingdom. This work was supported by the British Heart Foundation (grants RE/13/5/30177 and PG/11/2/28474), the National Health Service, and the Chief Scientist Office. Prof. Berry was supported by a senior fellowship from the Scottish Funding

**ABBREVIATIONS
AND ACRONYMS****CI** = confidence interval**IMR** = index of microcirculatory resistance**LV** = left ventricular**MACE** = major adverse cardiovascular event(s)**MI** = myocardial infarction**MRI** = magnetic resonance imaging**MVO** = microvascular obstruction**NT-proBNP** = N-terminal pro-B-type natriuretic peptide**OR** = odds ratio**PCI** = percutaneous coronary intervention**STEMI** = ST-segment elevation myocardial infarction

Cigarette smoking is persistently common (1,2) and causal in the pathophysiology of acute myocardial infarction (MI) (3-6). An apparent paradoxical relationship has been described between smoking and prognosis after acute MI, with lower crude rates of adverse cardiac events reported (7-12). Confounders, including younger age and fewer vascular risk factors, may explain the smoker's paradox (6-12). Moreover, the duration of follow-up in many studies was ≤ 12 months, and those studies with longer follow-up identified smoking as an adverse prognostic factor (13-15), implying the risk may operate in the longer term post-MI.

The pathophysiology of myocardial reperfusion injury in smokers with acute ST-segment elevation MI (STEMI) is incompletely understood. Higher epicardial coronary flow rates after primary percutaneous coronary intervention (PCI) have been reported in current smokers versus nonsmokers (10). Studies of smoking and microvascular pathology, using cardiac magnetic resonance (CMR), have reported conflicting results (12,16), specifically pertaining to myocardial hemorrhage (an independent predictor of adverse outcome post-MI) (17,18). The MRI method in previous studies was not specific for detecting myocardial hemorrhage, and information on health outcomes was limited to 12-month follow-up (12) or was unavailable (16). T2* mapping has emerged as a specific technique for detecting myocardial hemorrhage post-MI (18), with potential to resolve this controversy. Further insights into the effect of smoking on myocardial reperfusion injury could be provided by invasive microcirculatory assessment in the culprit coronary artery, using index of microcirculatory resistance (IMR), which is associated with infarct size, left ventricular (LV) pathology, and health outcomes (19-24).

We aimed to prospectively investigate associations between smoking, microvascular pathology and longer term health outcomes in patients with acute STEMI. We hypothesized that current smoking in patients with acute STEMI would be associated with acute

microvascular dysfunction revealed by IMR and progressive hemorrhagic transformation within the infarct zone revealed by T2* MRI 2 days post-MI. We also hypothesized that smoking would be an independent predictor of adverse longer term health outcomes.

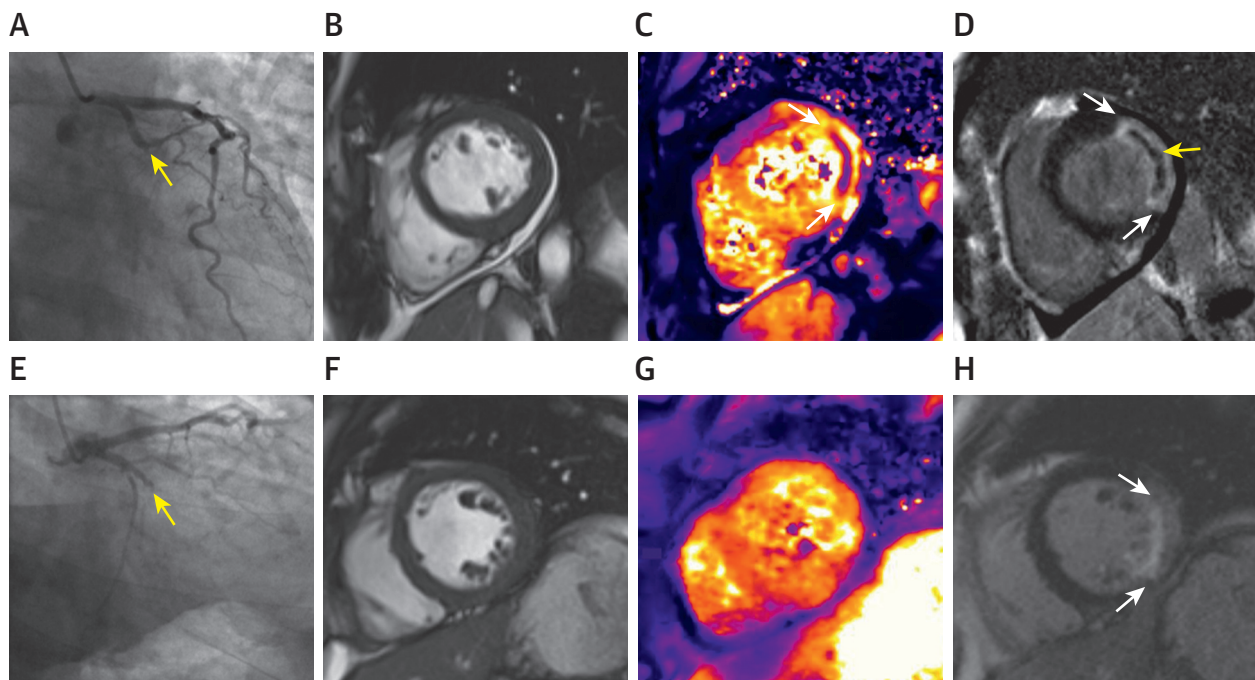
METHODS

STUDY POPULATION. We performed a prospective cohort study at a regional cardiac center from July 2011 to November 2012. Patients provided written informed consent to undergo diagnostic guidewire-based assessment after reperfusion, then MRI 2 days and 6 months later and follow-up for health outcomes in the longer term. Patients were eligible if they had indications for primary PCI or thrombolysis for acute STEMI (25). Exclusion criteria were standard contraindications to MRI. Current smoking status was defined as use of ≥ 100 cigarettes by a patient in his or her lifetime who currently routinely smoked cigarettes (26). Primary PCI and secondary prevention measures, including cardiac rehabilitation with risk factor management, were implemented according to contemporary guidelines (25). The study was approved by the National Research Ethics Service (10-S0703-28). The ClinicalTrials.gov identifier is [NCT02072850](https://clinicaltrials.gov/ct2/show/study/NCT02072850).

IMR IN THE CULPRIT CORONARY ARTERY. A coronary guidewire with a pressure and temperature sensor (St. Jude Medical, St. Paul, Minnesota) was used to measure IMR in the culprit coronary artery at the end of primary or rescue PCI. The guidewire was calibrated outside the body, equalized with aortic pressure at the ostium of the guide catheter, and then advanced to the distal third of the culprit artery. IMR, an invasive measure of microvascular resistance, is defined as distal coronary pressure multiplied by mean transit time of a bolus of saline at room temperature, during maximal coronary hyperemia (23). Hyperemia was induced by 140 $\mu\text{g}/\text{kg}/\text{min}$ of intravenous adenosine preceded by an intracoronary bolus of 200 μg of nitrate. We previously found IMR to be highly repeatable when assessed by duplicate measurements 5 min apart in 12 consecutive patients with STEMI at the end of PCI (20).

Council. Drs. Mangion, Maznyczka, and Welsh are supported by British Heart Foundation fellowships FS/15/54/31639, FS/16/74/32573, and FS/12/62/29889, respectively. Siemens Healthcare provided work-in-progress imaging methods. On the basis of institutional agreements with the University of Glasgow, Prof. Berry has acted as a consultant to Abbott Vascular, Opsens, and Coroventis; and has received travel support from Philips. Prof. Oldroyd has acted as consultant to Abbott Vascular, Boston Scientific, and Volcano Corporation. These companies were not involved in the current research or the manuscript. All other authors have reported that they have no relationships relevant to the contents of this paper to disclose. Drs. Haig and Carrick contributed equally to this work.

Manuscript received February 12, 2018; revised manuscript received May 15, 2018, accepted May 17, 2018.

FIGURE 1 Smoking and Myocardial Hemorrhage After Acute ST-Segment Elevation Myocardial Infarction

Current smoker (**top**) and nonsmoker (**bottom**) who underwent primary percutaneous coronary intervention (PCI) for lateral ST-segment elevation myocardial infarction. Both had TIMI (Thrombolysis in Myocardial Infarction) flow grade 3 post-PCI. Antithrombotic therapies, including aspirin, clopidogrel, and unfractionated heparin, were similar for both patients. Magnetic resonance imaging (MRI) was performed 2 days and 6 months later. (**Top**) Imaging from a 58-year-old male current smoker. Symptom-to-balloon time was 8.5 hours. Angiography revealed a proximally occluded circumflex coronary artery (**yellow arrow, A**). Two days later, myocardial hemorrhage was revealed by T2* mapping (**white arrow, C**). Late gadolinium enhancement revealed transmural infarction of the lateral left ventricular (LV) wall (**white arrows, D**) associated with microvascular obstruction (MVO) (**yellow arrow, D**). Baseline infarct size was 32.3%, LV ejection fraction 55%, and LV end-diastolic volume indexed to body surface area (LVEDVi) 83.8 ml/m². Six months later, infarct size was 31.2% and LVEDVi 84.8ml/m², consistent with adverse remodeling. (**Bottom**) Imaging from a 48-year-old male nonsmoker. Symptom-to-balloon time was 9.3 hours. Angiography revealed a proximally occluded circumflex coronary artery (**yellow arrow, E**). Two days later, there was no evidence of myocardial hemorrhage (**G**) or MVO within the infarct zone (**H**) on MRI. Baseline infarct size was 25.3%, LV ejection fraction 51%, and LVEDVi 78.4 ml/m². Six months later, infarct size was 15.2% and LVEDVi 72.7 ml/m².

ELECTROCARDIOGRAPHY. Twelve-lead electrocardiograms were obtained before coronary reperfusion and 60 min afterward. ST-segment resolution assessed 60 min after reperfusion was compared with the baseline electrocardiogram before reperfusion and was expressed as complete (70%), incomplete (30% to <70%), or none (30%).

CORONARY ANGIOGRAPHIC ACQUISITION AND ANALYSES. Coronary angiograms were acquired during usual care with a cardiac catheter laboratory radiograph (Innova, GE Healthcare, Little Chalfont, UK) and information technology equipment (Centricity, GE Healthcare). Angiograms were analyzed by trained observers (J.C., V.T.Y.M.) who were blinded to other clinical and MRI data. TIMI (Thrombolysis In Myocardial Infarction) coronary flow grade (27) and frame count (28) were assessed at initial angiography and at the end of the procedure.

TIMI myocardial perfusion grade (29) was assessed at the end of the procedure (Online Appendix).

LABORATORY ANALYSES. The blood samples and analyses of hematology and biochemistry, including serum troponin T, C-reactive protein, and N-terminal pro-B-type natriuretic peptide (NT-proBNP) are described in the Online Appendix.

CARDIAC MRI. MRI was used to provide reference data on LV function, pathology, and surrogate outcomes (Figure 1). MRI was performed using a Siemens MAGNETOM Avanto (Siemens Healthcare, Erlangen, Germany) 1.5-T scanner with a 12-element phased-array cardiac surface coil. The imaging protocol (18,21,22,30) (Online Appendix) included cine MRI with steady-state free precession, T2 mapping (31,32), T2* mapping (18), and delayed-enhancement phase-sensitive inversion recovery pulse sequences (33).

TABLE 1 Clinical and Angiographic Characteristics of 324 Patients With ST-Segment Elevation Myocardial Infarction Categorized According to Smoking Status at Initial Presentation

| | All Patients (N = 324) | Nonsmokers (n = 128 [40%]) | Current Smokers (n = 196 [60%]) | p Value |
|----------------------------------|---------------------------|-------------------------------|------------------------------------|------------|
| Age, yrs | 59 ± 12 | 65 ± 10 | 55 ± 11 | <0.001 (t) |
| Male | 237 (73) | 98 (77) | 139 (71) | 0.305 |
| BMI, kg/m ² | 28.8 ± 4.8 | 29.1 ± 4.6 | 28.6 ± 4.8 | 0.346 (t) |
| Hypertension | 105 (32) | 53 (41) | 52 (27) | 0.007 |
| Hypercholesterolemia | 94 (29) | 44 (34) | 50 (26) | 0.103 |
| Diabetes mellitus* | 34 (11) | 14 (11) | 20 (10) | 0.854 |
| Previous myocardial infarction | 25 (8) | 11 (9) | 14 (7) | 0.673 |
| Previous PCI | 18 (6) | 8 (6) | 10 (5) | 0.805 |
| Presenting characteristics | | | | |
| Heart rate, beats/min | 78 ± 17 | 77 ± 16 | 78 ± 18 | 0.518 (t) |
| Systolic blood pressure, mm Hg | 135 ± 25 | 137 ± 23 | 134 ± 25 | 0.264 (t) |
| Symptom-to-reperfusion time, min | 174 (120-315) | 176 (120-307) | 171 (122-324) | 0.984 (MW) |
| Killip class at presentation† | | | | |
| I | 233 (72) | 100 (78) | 133 (68) | |
| II | 68 (21) | 21 (16) | 47 (24) | 0.138 |
| III/IV | 23 (7) | 7 (6) | 16 (8) | |
| ST-segment resolution post-PCI | | | | |
| Complete, ≥70% | 148 (46) | 46 (36) | 102 (52) | |
| Incomplete, 30% to <70% | 127 (39) | 57 (45) | 70 (36) | 0.010 |
| None, ≤30% | 48 (15) | 25 (20) | 23 (12) | |
| Reperfusion strategy | | | | |
| Primary PCI | 302 (93) | 122 (95) | 180 (92) | |
| Rescue PCI (failed thrombolysis) | 14 (4) | 4 (3) | 10 (5) | 0.497 |
| Successful thrombolysis | 8 (3) | 2 (2) | 6 (3) | |
| Coronary angiography | | | | |
| Number of diseased arteries‡ | | | | |
| 1 | 174 (54) | 64 (50) | 110 (56) | |
| 2 | 99 (31) | 41 (32) | 58 (30) | 0.635 |
| 3 | 45 (14) | 21 (16) | 24 (12) | |

Continued on the next page

The scan acquisitions were spatially coregistered and also included different slice orientations to enhance diagnostic confidence.

IMAGING ANALYSES. The MRI analyses are described in detail in the [Online Appendix](#). The results of infarct characteristics are reported for the whole of the left ventricle.

INFARCT SIZE, MICROVASCULAR OBSTRUCTION, AND MYOCARDIAL HEMORRHAGE. The presence of acute infarction was established on the basis of abnormalities in cine wall motion, rest first-pass myocardial perfusion, and delayed-enhancement imaging in 2 imaging planes. The myocardial mass of late gadolinium (grams) was quantified using computer-assisted planimetry, and the territory of

infarction was delineated using a signal intensity threshold of >5 SDs above a remote reference region and expressed as a percentage of total LV mass (18,21,22,30,34).

Microvascular obstruction (MVO) was defined as a dark zone on late gadolinium enhancement imaging 1, 3, and 5 min post-contrast injection that remained present within an area of late gadolinium enhancement at 15 min. On the T2* MRI maps, a region of reduced signal intensity within the infarcted area with a T2* value of <20 ms (18,35) was considered to confirm the presence of myocardial hemorrhage.

MYOCARDIAL EDEMA AND SALVAGE. The extent of myocardial edema was defined as LV myocardium with pixel values >2 SDs from remote myocardium (36-38). Myocardial salvage was calculated by subtraction of percentage infarct size from percentage area at risk, as reflected by the extent of edema (20,36-39). The myocardial salvage index was calculated by dividing the myocardial salvage area by the initial area at risk.

LV REMODELING. An increase of ≥20% in LV end-diastolic volume at 6 months from baseline was taken to reflect adverse LV remodeling (40).

PRE-SPECIFIED HEALTH OUTCOMES. The primary composite outcome was all-cause death or first heart failure event following the initial hospitalization. The second composite outcome was major adverse cardiovascular events (MACE) including cardiac death, nonfatal MI, and urgent coronary revascularization. These outcomes were independently assessed by cardiologists blind to the baseline findings ([Online Appendix](#)) (41).

STATISTICAL ANALYSES. The sample size calculation and statistical methods are described in the [Online Appendix](#). Differences in continuous variables between groups were assessed using the Student *t*-test or analysis of variance for parametric data and the Mann-Whitney *U* test or Kruskal-Wallis *H* test for nonparametric data. Differences in categorical variables were assessed using a chi-square or Fisher exact test. Univariate and multivariate associations were assessed using binary logistic regression or linear regression as appropriate. Binary logistic models were compared using Harrel's *C* statistic. Logistic regression (odds ratio [OR] and 95% confidence interval [CI]) was used to identify clinical predictors (patient characteristics and MRI findings) of all-cause death or heart failure events. Statistical analyses were performed using R version 2.15.1 (R Foundation for Statistical Computing, Vienna, Austria) or SAS version 9.3 (SAS Institute, Cary, North Carolina). A *p* value <0.05 represented statistical significance.

RESULTS

PATIENT CHARACTERISTICS. Of 372 consecutive patients with acute STEMI who were assessed for eligibility, 324 (87%) (mean age 59 ± 12 years, 237 [73%] men, 196 [60%] smokers) were enrolled (Table 1, Figure 2). Reasons for not being enrolled are detailed in Figure 2. Compared with nonsmokers, current smokers were younger and had fewer cardiovascular risk factors (Table 1). The distribution of the infarct-related artery differed between smokers and nonsmokers, whereas the biochemical size of infarction was similar.

CULPRIT ARTERY BLOOD FLOW AND REPERFUSION INJURY. At the end of the emergency PCI procedure, TIMI flow grade in the culprit coronary artery was higher (≥ 2 vs. ≤ 1) in smokers than nonsmokers ($p = 0.024$), whereas TIMI blush grade and frame count were similar between groups. At 60 min post-reperfusion, ST-segment resolution was achieved more often in smokers than nonsmokers ($p = 0.01$). IMR tended to be lower in smokers (22 [interquartile range: 15 to 41] vs. 27 [interquartile range: 16 to 47], $p = 0.062$), although the difference was not statistically significant.

SYSTEMIC INFLAMMATION AND NT-proBNP. On day 1, circulating C-reactive protein, neutrophil, and monocyte levels were higher in current smokers, whereas NT-proBNP concentrations were lower (Table 1).

CARDIAC MRI FINDINGS. Three hundred twenty-four patients underwent MRI 2.1 ± 1.8 days after hospitalization, and 295 patients (91%) underwent follow-up MRI at 6 months (Table 2, Figure 2). Case examples are shown in Figure 1.

LV ejection fraction and mass in a subgroup of 10 randomly chosen patients were independently measured by 2 observers. The intraclass correlation coefficient for reliability of LV ejection fraction was 0.997 (95% CI: 0.963 to 0.999; $p < 0.001$). The mean absolute difference between measures was 0.99 ml/m^2 , and the root mean square error was 0.93. The intraclass correlation coefficient for reliability of LV mass was 0.997 (95% CI: 0.982 to 0.999; $p < 0.001$). The mean absolute difference between measures was 2.83 g/m^2 , and the root mean square error was 3.51. Bland-Altman plots showed no evidence of bias.

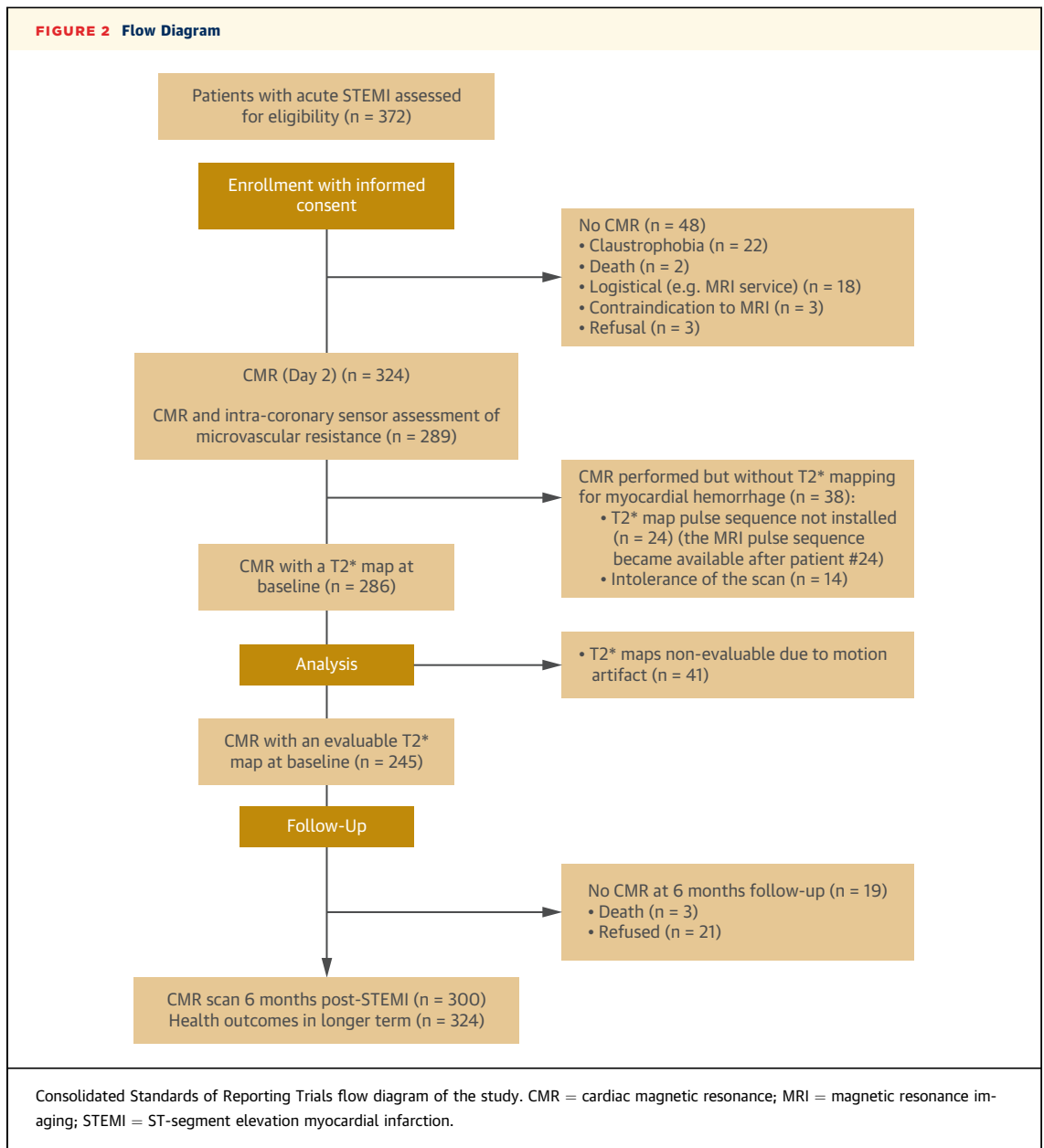
Baseline infarct size, MVO, and LV function were similar between groups, whereas LV mass was greater in male smokers than male nonsmokers, consistent with the age difference between the groups (Table 1). T2* MRI for myocardial hemorrhage was performed in 286 patients (88%), and 245 (85%) had evaluable T2* maps. The percentage of patients with myocardial

TABLE 1 Continued

| | All Patients (N = 324) | Nonsmokers (n = 128 [40%]) | Current Smokers (n = 196 [60%]) | p Value |
|--|---------------------------|-------------------------------|------------------------------------|---------------|
| Culprit artery | | | | |
| LM | 6 (2) | 2 (2) | 4 (2) | |
| LAD | 121 (37) | 50 (39) | 71 (36) | |
| LCx | 59 (18) | 15 (12) | 44 (22) | 0.045 |
| RCA | 144 (44) | 63 (49) | 81 (41) | |
| TIMI coronary flow grade pre-PCI | | | | |
| 0/1 | 236 (73) | 93 (73) | 143 (73) | |
| 2/3 | 88 (27) | 35 (27) | 53 (27) | 1.000 |
| TIMI coronary flow grade post-PCI | | | | |
| 0/1 | 4 (1) | 4 (3) | 0 (0) | |
| 2/3 | 320 (99) | 124 (97) | 196 (100) | 0.024 |
| TIMI frame count post-PCI | 15.9 (10.0-24.3) | 15.7 (10.0-24.0) | 16.0 (9.9-24.7) | 0.631 (MW) |
| TIMI blush grade post-PCI | | | | |
| 0 | 70 (23) | 26 (21) | 44 (24) | |
| 1 | 17 (6) | 7 (6) | 10 (5) | 0.901 |
| 2 | 157 (51) | 65 (53) | 92 (49) | |
| 3 | 65 (21) | 24 (20) | 41 (22) | |
| Culprit lesion, percentage residual stenosis | 12.4 (5.4) | 12.4 (5.6) | 12.4 (5.2) | 0.997 (t) |
| Index of microvascular resistance [§] | 1.6 (1.1-2.1) | 27 (16-47) | 22 (15-41) | 0.062 |
| Aspiration thrombectomy | 236 (73) | 92 (72) | 144 (74) | 0.799 |
| Glycoprotein IIb/IIIa inhibitor | 297 (92) | 118 (92) | 179 (91) | 0.840 |
| Medical therapy at discharge | | | | |
| ACE inhibitor or ARB | 320 (99) | 127 (98) | 193 (99) | 0.579 |
| Beta-blocker | 308 (95) | 121 (95) | 187 (95) | 0.795 |
| Statin | 324 (100) | 128 (100) | 196 (100) | 1.00 |
| Antiplatelet therapy | | | | |
| Aspirin | 323 (99.7) | 128 (100.0) | 195 (99.5) | 1.00 |
| Clopidogrel | 321 (99.1) | 127 (99.2) | 194 (99.0) | 1.00 |
| Initial blood results on admission | | | | |
| Creatinine, $\mu\text{g/l}$ | 77.8 ± 18.9 | 83.2 ± 21.4 | 74.3 ± 16.2 | <0.001 (t) |
| C-reactive protein, mg/lS | 4 (2-7) | 3 (2-7) | 4 (2-8) | 0.035 (MW) |
| Interleukin-6, pg/ml | 6.8 (4.4-10.8) | 7.8 (4.6-12.3) | 6.4 (4.4-10.6) | 0.531 (MW) |
| Neutrophil count, $\times 10^6/\text{l}$ | 9.1 (7.2-11.6) | 8.3 (6.7-10.4) | 9.6 (7.9-12.1) | <0.001 (MW) |
| Monocyte count, $\times 10^6/\text{l}$ | 0.8 (0.6-1.0) | 0.7 (0.6-0.9) | 0.9 (0.7-1.1) | <0.001 (MW) |
| NT-proBNP, pg/l | 864 (345-1,637) | 1,040 (529-1,860) | 646 (300-1,388) | 0.022 (MW) |
| Troponin T, ng/lS | 1,710 (110-5,099) | 1,496 (82-4,410) | 1,945 (178-5,133) | 0.265 (MW) |

Values are mean \pm SD, n (%), or median (interquartile range). The p values were obtained from Student t-tests (t), Mann-Whitney U tests (MW), or Fisher exact tests. TIMI flow grades pre- and post-PCI were grouped as 0/1 versus 2/3 for this analysis. *Diabetes mellitus was defined as a history of diet-controlled or treated diabetes. †Killip classification of heart failure after acute myocardial infarction: class I, no heart failure; class II, pulmonary rales or crepitations, a third heart sound, and elevated jugular venous pressure; class III, acute pulmonary edema; class IV, cardiogenic shock. ‡Multivessel coronary artery disease was defined according to the number of stenoses of at least 50% of the reference vessel diameter, by visual assessment, and whether or not there was left main stem involvement. §C-reactive protein was available in 316 subjects, and troponin T was available in 313 subjects. IMR was available in 283 subjects.

ACE = angiotensin-converting enzyme; ARB = angiotensin receptor blocker; BMI = body mass index; LAD = left anterior descending coronary artery; LCx = left circumflex coronary artery; LM = left main coronary artery; NT-proBNP = N-terminal pro-brain natriuretic peptide; PCI = percutaneous coronary intervention; RCA = right coronary artery; TIMI = Thrombolysis In Myocardial Infarction.



hemorrhage was higher in smokers (46%) than in nonsmokers (34%), although this difference was not significant (Table 2).

MULTIVARIATE ASSOCIATIONS FOR CURRENT SMOKING WITH MICROVASCULAR INFARCT PATHOLOGY REVEALED BY MRI. Microvascular obstruction. In a binary logistic regression model with baseline characteristics, smoking was independently associated with MVO (OR: 1.72; 95% CI: 1.02 to 2.90; $p = 0.041$) (Online Appendix), but this association became nonsignificant when infarct size (reflected by peak troponin I concentration) was included in the model ($p = 0.11$).

Myocardial hemorrhage. Smoking was an independent associate of myocardial hemorrhage (OR: 2.55; 95% CI: 1.39 to 4.70; $p = 0.003$), along with male sex, TIMI coronary flow grade at the end of PCI, and ST-segment resolution (Table 3). Unlike MVO, this association was independent of infarct size, as reflected by peak troponin I (OR: 2.76; 95% CI: 1.42 to 5.37; $p = 0.003$).

SMOKING AND LV OUTCOMES AT 6 MONTHS. LV end-diastolic volume and function. A history of smoking was a multivariate associate of LV end-diastolic volume at 6 months ($\beta = 4.85$; 95% CI: -0.59 to 10.28; $p = 0.08$), but the association was not statistically

significant. Smoking was not associated with either adverse LV remodeling or LV ejection fraction at 6 months ($p = 0.26$).

MICROVASCULAR DYSFUNCTION AND LONGER TERM HEALTH OUTCOMES. All ($n = 324$) patients had long-term follow-up data completed. The median duration of follow-up was 4 years (post-discharge censor duration range 3.9 to 4.9 years). Forty-seven patients (15%) died or experienced a first heart failure event during the index hospitalization or post-discharge. These events included 4 cardiovascular deaths, 11 noncardiovascular deaths, 2 deaths of undetermined cause, and 30 episodes of heart failure (Killip class \geq III [$n = 28$] or defibrillator implantation [$n = 2$]). Twenty-three patients (7%) died or experienced a first heart failure hospitalization post-discharge. Smoking was a multivariate associate of all-cause death or heart failure events ($n = 32$ in smokers, $n = 15$ in nonsmokers; OR: 2.20; 95% CI: 1.07 to 4.54; $p = 0.032$) (Table 4).

Forty-nine patients (15%) experienced MACE during the index hospitalization or post-discharge. These events included 3 cardiovascular deaths, 4 episodes of STEMI, 13 episodes of non-STEMI, and 29 episodes of heart failure (Killip class \geq III [$n = 27$] or defibrillator implantation [$n = 2$]). One patient experienced a STEMI and was censored before experiencing an episode of heart failure, hence there were 30 heart failure events for all-cause death or heart failure and 29 for MACE during a median of 4 years of follow-up ($n = 35$ in smokers, $n = 14$ in nonsmokers; OR: 2.79; 95% CI: 2.30 to 5.99; $p = 0.008$) (Table 4).

DISCUSSION

We have undertaken a large prospective study of smoking status, infarct pathophysiology, and long-term prognosis in patients with acute STEMI. We found that current smoking is associated with a more favorable cardiovascular risk profile at initial presentation (e.g. younger age, fewer patients with hypertension, and higher coronary flow grades at the end of primary PCI), reflecting better procedural outcomes. Contrary to our hypothesis, acute reperfusion injury (revealed invasively by IMR and noninvasively by ST-segment resolution on electrocardiography) was less pronounced in smokers, suggesting initial favorable findings associated with smoking. Subsequent assessments revealed a less favorable risk profile in smokers in the days following the acute event, including more pronounced systemic inflammation on day 1. In multivariate analyses, smoking was independently associated with a 3-fold

TABLE 2 Cardiac Magnetic Resonance Imaging Findings at 2 Days and 6 Months Post-Reperfusion in 324 Patients With ST-Segment Elevation Myocardial Infarction Categorized According to Smoking Status

| | All Patients (n = 324) | Nonsmokers (n = 128 [40%]) | Current Smokers (n = 196 [60%]) | p Value |
|--|---------------------------|----------------------------------|--|------------|
| CMR findings 2 days post-MI (n = 324) | | | | |
| LV ejection fraction, % | 55 ± 10 | 55 ± 10 | 55 ± 10 | 0.802 (t) |
| LVEDV, ml | | | | |
| Men | 161 ± 33 | 156 ± 28 | 165 ± 36 | 0.051 (t) |
| Women | 125 ± 25 | 122 ± 27 | 127 ± 24 | 0.423 (t) |
| LVESV, ml | | | | |
| Men | 75 ± 27 | 72 ± 24 | 78 ± 28 | 0.117 (t) |
| Women | 55 ± 18 | 55 ± 19 | 55 ± 18 | 0.856 (t) |
| LV mass, g | | | | |
| Men | 145 ± 33 | 139 ± 27 | 149 ± 36 | 0.016 (t) |
| Women | 99 ± 23 | 96 ± 25 | 100 ± 22 | 0.711 (t) |
| Edema and infarct characteristics | | | | |
| Myocardial edema, percentage LV mass | 32 ± 12 | 32 ± 12 | 32 ± 12 | 0.663 (t) |
| T2 relaxation times (ms) in regions of interest | | | | |
| Infarct zone | 62.9 ± 5.1 | 63.3 ± 5.0 | 62.6 ± 5.2 | 0.224 (t) |
| Infarct core | 53.9 ± 4.8 | 54.1 ± 4.7 | 53.7 ± 5.0 | 0.570 (t) |
| Remote zone T2 | 49.7 ± 2.1 | 49.5 ± 2.0 | 49.9 ± 2.1 | 0.176 (t) |
| Infarct size, percentage LV mass | 16 ± 7, 27 | 19 ± 7, 27 | 15 ± 7, 28 | 0.752 (MW) |
| Myocardial salvage index, percentage of LV mass | 63 ± 24 | 64 ± 23 | 62 ± 25 | 0.678 (t) |
| Late microvascular obstruction | 164 (51) | 62 (48) | 102 (52) | 0.570 |
| Late microvascular obstruction, percentage LV mass | 0.2 (0.0 to 3.5) | 0.0 (0.0 to 3.3) | 0.3 (0.0 to 3.8) | 0.572 (MW) |
| Myocardial hemorrhage | 101 (41) | 31 (34) | 70 (46) | 0.081 |
| CMR findings 6 months post-MI (n = 295) | | | | |
| LV ejection fraction at 6 months, % | 63 (57 to 69) | 63 (57 to 68) | 63 (56 to 69) | 0.780 (MW) |
| LVESV at 6 months, ml | | | | |
| Men | 62 (44 to 79) | 60 (42 to 75) | 64 (48 to 82) | 0.121 (MW) |
| Women | 43 (33 to 58) | 49 (39 to 60) | 41 (33 to 54) | 0.119 (MW) |
| Change in LVEDV at 6 months from baseline, ml | | | | |
| Men | 7 (-7 to 21) | 7 (-8 to 18) | 6 (-7 to 22) | 0.687 (MW) |
| Women | 1 (-12 to 9) | 3 (-11 to 9) | -2 (-13 to 10) | 0.639 (MW) |
| <p>Values are mean ± SD, n (%), or median (interquartile range). Area at risk was measured using T2 mapping. P values were obtained using Student t-tests (t), Mann-Whitney U tests (MW), or Fisher exact tests. LV ejection fraction was missing in 29 subjects at follow-up. LVEDV at follow-up was missing in 16 men and 8 women. T2* imaging for myocardial hemorrhage was available in 245 subjects.</p> <p>CMR = cardiac magnetic resonance; LV = left ventricular; LVEDV = LV end-diastolic volume; LVESV = left ventricular end-systolic volume; MI = myocardial infarction; T1 = myocardial longitudinal relaxation time.</p> | | | | |

increased likelihood of myocardial hemorrhage on day 2, independent of infarct size. Finally, current smoking was independently associated with a 2-fold increased risk for all-cause death or heart failure during a median of 4 years of follow-up (similar associations were observed for MACE).

TABLE 3 Multivariate Associations Between Clinical Characteristics, Including Smoking, in 244 Patients With Acute ST-Segment Elevation Myocardial Infarction and Evaluable T2* Mapping for Myocardial Hemorrhage

| Binary Logistic Regression | Odds Ratio (95% CI) | p Value |
|--|---------------------|---------|
| Univariate models | | |
| TIMI coronary flow grade 2/3 pre-PCI | 0.26 (0.13–0.51) | <0.001 |
| Peak troponin I, ng/l | 1.00 (1.00–1.00) | <0.001 |
| ST-segment elevation resolution post-PCI | | |
| None, ≤30% | 3.37 (1.56–7.26) | 0.002 |
| Incomplete, 30% to <70% | 2.31 (1.30–4.10) | 0.004 |
| Killip class II | 1.59 (0.87–2.93) | 0.14 |
| Killip class III/IV | 30.37 (3.93–234.69) | 0.001 |
| Male | 1.97 (1.04–3.71) | 0.037 |
| Current cigarette smoker | 1.66 (0.97–2.84) | 0.064 |
| History of hypertension | 1.50 (0.87–2.59) | 0.143 |
| Multivariate model | | |
| TIMI coronary flow grade 2/3 pre-PCI | 0.25 (0.12–0.51) | <0.001 |
| Male | 2.67 (1.33–5.38) | 0.006 |
| Current cigarette smoker | 2.55 (1.39–4.70) | 0.003 |
| ST-segment elevation resolution post-PCI | | |
| Incomplete, 30% to <70% | 2.44 (1.31–4.53) | 0.005 |
| None, ≤30% | 3.90 (1.69–9.02) | 0.001 |
| History of hypertension | 1.81 (0.98–3.34) | 0.059 |
| Harrel's C statistic | 0.746 | |
| <p>The univariate associations for the patient characteristics at initial presentation and myocardial hemorrhage include those listed in the table and age (1 year), $p = 0.74$; body mass index (1 kg/m^2), $p = 0.85$; history of hypertension, $p = 0.14$; hypercholesterolemia, $p = 0.39$; prior angina, $p = 0.39$; previous MI, $p = 0.61$; diabetes, $p = 0.16$; heart rate (1 beat/min), $p = 0.20$; and sustained ventricular arrhythmia, $p = 0.66$. All of the univariate characteristics were used to determine the multivariate model. A manual backward selection approach was used to establish the final model using a p value threshold for exclusion of 0.10. When smoking is removed from the model, the C statistic drops from 0.746 to 0.712.</p> <p>CI = confidence interval; other abbreviations as in Table 1.</p> | | |

TABLE 4 Relationships for Smoking Status in 324 Subjects and All-Cause Death or First Hospitalization for Heart Failure or Major Adverse Cardiovascular Events During or After the Index Hospitalization Obtained Using Logistic Regression

| Associations | Odds Ratio (95% CI) | p Value |
|---|---------------------|---------|
| All-cause death or first hospitalization for heart failure | | |
| History of myocardial infarction | 6.19 (2.40–15.95) | <0.001 |
| History of hypertension | 2.53 (1.28–4.98) | 0.007 |
| ST-segment elevation resolution post-PCI | | |
| Incomplete, 30% to <70% | 3.41 (1.54–7.56) | 0.003 |
| None, ≤30% | 4.13 (1.55–11.06) | 0.005 |
| Current cigarette smoker | 2.20 (1.07–4.54) | 0.032 |
| MACE | | |
| History of myocardial infarction | 5.16 (1.87–14.25) | 0.002 |
| Ventricular arrhythmia | 5.11 (1.68–15.50) | 0.004 |
| TIMI coronary flow grade 2/3 pre-PCI | 0.20 (0.07–0.60) | 0.004 |
| Current cigarette smoker | 2.79 (2.30–5.99) | 0.008 |
| ST-segment elevation resolution post-PCI | | |
| Incomplete, 30% to <70% | 2.86 (1.27–6.46) | 0.011 |
| None, ≤30% | 7.28 (2.78–19.02) | <0.001 |
| <p>The median duration of follow-up was 4 years (post-discharge censor duration range: 1,236 to 1,801 days). Forty-seven patients (15%) died or experienced a first heart failure event during the index hospitalization or post-discharge. Forty-nine patients (15%) experienced MACE.</p> <p>MACE = major adverse cardiovascular event(s); other abbreviations as in Table 1.</p> | | |

Despite their younger age, the longer-term prognosis of smokers is worse than that of nonsmokers, including for cardiac events. Our findings should dispel the false notion of any favorable associations between smoking and prognosis after acute STEMI.

NEW PATHOPHYSIOLOGICAL INSIGHTS INTO THE APPARENT SMOKER'S PARADOX IN ACUTE STEMI. Consistent with prior studies (4,7–12,16), we found that smoking was crudely associated with more favorable presenting characteristics (e.g., younger age) and procedure outcomes. In contrast to prior reports (7–12), smoking was independently associated with increased risk for adverse longer term health outcomes.

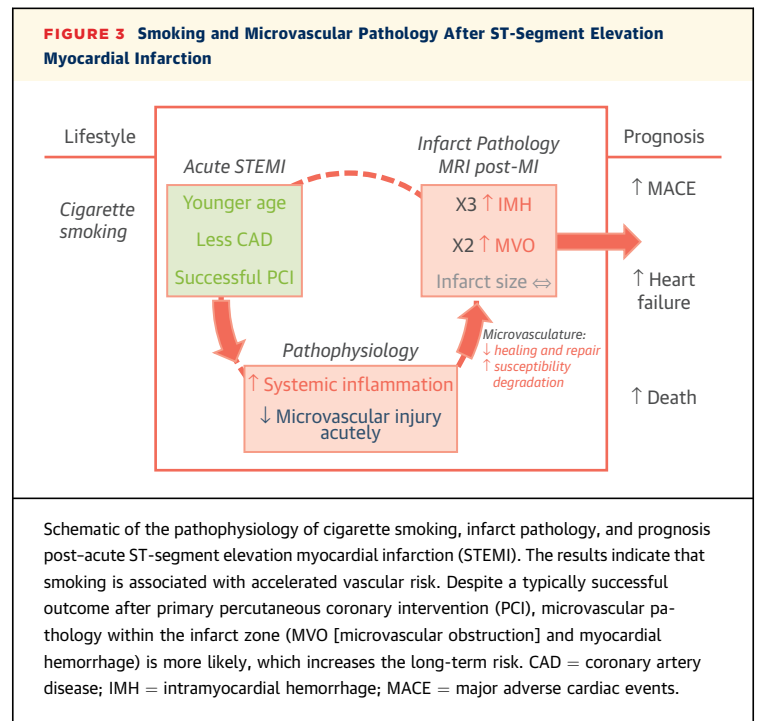
Our results indicate distinct phases in the early course of MI in smokers (Figure 3). We observed a reverse paradox in that smoking was associated with less reperfusion injury acutely, as revealed by angiography, electrocardiography, and invasive microcirculatory measurements using IMR, but 2 days later, myocardial hemorrhage was more pronounced (Figure 1), even after adjustment for confounding covariates.

We postulate the following explanations for these findings. First, smokers were younger, they had fewer risk factors for microvascular dysfunction (4,7–12), and they presented with anterior MI less often. These factors most likely explain why smokers had less reperfusion injury acutely. Given the harmful effects of smoking on vascular health (4), the reperfused microvessels in smokers may have reduced repair potential and thus greater susceptibility to progressive degradation within the infarct core in the days after reperfusion. Second, in a serial imaging study, we found that myocardial hemorrhage was preceded by MVO (18), as MVO is an upstream event that may resolve. Our results indicate that the progression to infarct zone hemorrhage, rather than recovery without hemorrhage, was more likely in smokers than nonsmokers. Even after accounting for infarct size, the association between smoking and infarct zone hemorrhage persisted, unlike for MVO. This observation is prognostically relevant because myocardial hemorrhage reflects irreversible tissue damage (17,18). A recent study that described the independent prognostic importance of MVO post-MI did not include information on myocardial hemorrhage (42). Using contemporary, multiparametric cardiac magnetic resonance using T2* mapping, we have found that myocardial hemorrhage is a much stronger determinant of adverse prognosis than MVO (18). The lack of an association between smoking and myocardial hemorrhage in prior studies (12) may have been related to the use of dark-blood T2-weighted

MRI, which has limited diagnostic accuracy (38) when considered against the more sensitive and specific T2* mapping (18,35). Third, current smoking was associated with systemic inflammation (Table 1), which is also independently associated with microvascular pathology (18) and prognosis (43). Inflammation may serve as a mechanistic link mediating progressive vascular injury and reduced repair potential within the infarct zone, leading in turn to myocardial hemorrhage. Some confounding observations included lower circulating NT-proBNP concentrations in smokers than in nonsmokers. This may be explained by the fact that compared with nonsmokers, current smokers were younger and had better renal function, and anterior MI occurred less often. Circulating concentrations of troponin are paradoxically lower in current smokers from the general population. The mechanisms of this observation remain to be elucidated (44).

RELEVANCE TO PUBLIC HEALTH. Our study has important public health implications. We observed that during longer term follow-up, current smoking prior to acute STEMI is a multivariate associate of all-cause death or heart failure, providing new insights into the smoker's paradox. The association between microvascular pathology and smoking provides a mechanistic explanation for the adverse risk. Because previous MI is a strong predictor of recurrent MI, efforts from health care professionals to help patients achieve smoking cessation are all the more relevant.

STUDY LIMITATIONS. We performed a single-center natural history study and enrolled a high proportion (~90%) of screened patients. The reasons in the majority of those patients not enrolled (Figure 2) related to contraindications to MRI (e.g., claustrophobia) and logistics, rather than the severity of MI, implying that the cohort is representative of an all-comers STEMI population. Smoking status was self-reported. We did not gather information on the duration, frequency, or type of cigarette smoking, nor did we gather information on smoking status during follow-up. All smokers were referred for smoking cessation therapy as part of cardiac rehabilitation. The mean LV ejection fraction (55%) probably reflects the comparatively short ischemic time overall (the median door-to-balloon time in our hospital is 21 min). The study population included 21 patients initially treated with thrombolysis, and 14 of these patients underwent rescue PCI. The main results of our study were unchanged when these patients were removed. Cigarette smoking post-MI may have influenced the prognostic associations between a history of smoking before the initial MI and adverse



cardiovascular events in the longer term. Smoking status was not reevaluated at 6 months, which represents a limitation of the study design. The multivariate model (Table 3) could be considered as overfitted by traditional standards. No adjustment was made for skewed variables in the multivariate analyses. Our analysis does not permit inference on causality, and further studies are warranted.

CONCLUSIONS

Current smokers presenting with acute STEMI are nearly 10 years younger than nonsmokers, consistent with an accelerated vascular risk. Current smoking is independently associated with irreversible infarct zone hemorrhage and systemic inflammation following acute STEMI and worse longer term health outcomes.

ACKNOWLEDGMENTS The authors thank the patients and staff members who participated in this study. They also thank Peter Weale and Patrick Revell (Siemens Healthcare, United Kingdom).

ADDRESS FOR CORRESPONDENCE: Prof. Colin Berry, British Heart Foundation, Glasgow Cardiovascular Research Centre, Institute of Cardiovascular and Medical Sciences, 126 University Place, University of Glasgow, Glasgow G12 8TA, United Kingdom. E-mail: colin.berry@glasgow.ac.uk. Twitter: @UofGICAMS.

PERSPECTIVES

COMPETENCY IN MEDICAL KNOWLEDGE: Our study provides new insights into the smoker's paradox. We have shown that cigarette smoking is independently associated with irreversible infarct zone hemorrhage, systemic inflammation following acute STEMI, and worse longer term health outcomes. Our results should dispel the false notion of any favorable associations between smoking and prognosis after acute STEMI. Because previous MI is a strong predictor of recurrent MI, efforts from

health care professionals to help patients achieve smoking cessation are all the more relevant.

TRANSLATIONAL OUTLOOK: Future studies are needed to confirm the findings using biochemical indicators of smoking status and using information on the duration, frequency, or type of cigarette smoking, as well as smoking status during follow-up.

REFERENCES

1. U.S. Department of Health and Human Services. The Health Consequences of Smoking: 50 Years of Progress: A Report of the Surgeon General. Atlanta, Georgia: U.S. Department of Health and Human Services, Centers for Disease Control and Prevention, National Center for Chronic Disease Prevention and Health Promotion, Office on Smoking and Health; 2014.
2. Writing Group Members, Mozaffarian D, Benjamin EJ, Go AS, et al. Executive summary: heart disease and stroke statistics—2016 update: a report from the American Heart Association. *Circulation* 2016;133:e38–360.
3. Burke AP, Farb A, Malcom GT, Liang YH, Smiale J, Virmani R. Coronary risk factors and plaque morphology in men with coronary disease who died suddenly. *N Engl J Med* 1997;336:1276–82.
4. Barua RS, Ambrose JA. Mechanisms of coronary thrombosis in cigarette smoke exposure. *Arterioscler Thromb Vasc Biol* 2013;33:1460–7.
5. Folts JD, Bonebrake FC. The effects of cigarette smoke and nicotine on platelet thrombus formation in stenosed dog coronary arteries: inhibition with phentolamine. *Circulation* 1982;65:465–70.
6. Barua RS, Sy F, Srikanth S, et al. Effect of cigarette smoke exposure on clot dynamics and fibrin structure: an ex-vivo investigation. *Arterioscler Thromb Vasc Biol* 2010;30:75–9.
7. Kelly TL, Gilpin E, Ahnve S, Henning H, Ross J Jr. Smoking status at the time of acute myocardial infarction and subsequent prognosis. *Am Heart J* 1985;110:535–41.
8. Grines CL, Topol EJ, O'Neill WW, et al. Effect of cigarette smoking on outcome after thrombolytic therapy for myocardial infarction. *Circulation* 1995;91:298–303.
9. Weisz G, Cox DA, Garcia E, et al. Impact of smoking status on outcomes of primary coronary intervention for acute myocardial infarction—the smoker's paradox revisited. *Am Heart J* 2005;150:358–64.
10. Weisz G, Cox DA, Garcia E, et al. Effect of smoking on infarct size and major adverse cardiac events in patient with large anterior ST-elevation myocardial infarction (from the INFUSE-AMI trial). *Am J Cardiol* 2016;118:1097–104.
11. Saad M, Fuernau G, Desch S, et al. "Smoker's paradox" in patients with cardiogenic shock complicating myocardial infarction—a substudy of the IABP-SHOCK II-trial and registry. *Int J Cardiol* 2016;222:775–9.
12. Reinstadler SJ, Eitel C, Fuernau G, et al. Association of smoking with myocardial injury and clinical outcome in patients undergoing mechanical reperfusion for ST-elevation myocardial infarction. *Eur Heart J Cardiovasc Imaging* 2017;18:39–45.
13. Gerber Y, Rosen LJ, Goldbourt U, Benyamini Y, Drory Y, for the Israel Study Group on First Acute Myocardial Infarction. Smoking status and long-term survival after first acute myocardial infarction a population-based cohort study. *J Am Coll Cardiol* 2009;54:2382–7.
14. Stone GW, Selker HP, Thiele H, et al. Relationship between infarct size and outcome following primary-PCI: patient-level analysis from 10 randomized trials. *J Am Coll Cardiol* 2016;67:1674–83.
15. Mons U, Muezzinler A, Gellert C, et al., for the CHANCES Consortium. Impact of smoking and smoking cessation on cardiovascular events and mortality among older adults: meta-analysis of individual participant data from prospective cohort studies of the CHANCES consortium. *BMJ* 2015;350:h1551.
16. Symons R, Masci PG, Francone M, et al. Impact of active smoking on myocardial infarction severity in reperfused ST-segment elevation myocardial infarction patients: the smoker's paradox revisited. *Eur Heart J* 2016;37:2756–64.
17. Eitel I, Kubusch K, Strohm O, et al. Prognostic value and determinants of a hypointense infarct core in T2-weighted cardiac magnetic resonance in acute reperfused ST-elevation myocardial infarction. *Circ Cardiovasc Imaging* 2011;4:354–62.
18. Carrick D, Haig C, Ahmed N, et al. Myocardial hemorrhage after acute reperfused ST-segment elevation myocardial infarction: relation to microvascular obstruction and prognostic significance. *Circ Cardiovasc Imaging* 2016;9:e004148.
19. McGeoch R, Watkins S, Berry C, et al. The index of microcirculatory resistance measured acutely predicts the extent and severity of myocardial infarction in patients with ST-segment elevation myocardial infarction. *J Am Coll Cardiol Intv* 2010;3:715–22.
20. Payne AR, Berry C, Doolin O, et al. Microvascular resistance predicts myocardial salvage and infarct characteristics in ST-elevation myocardial infarction. *J Am Heart Assoc* 2012;1:e002246.
21. Carrick D, Haig C, Carberry J, et al. Microvascular resistance of the culprit coronary artery in acute ST-elevation myocardial infarction. *JCI Insight* 2016;1:e85768.
22. Carrick D, Haig C, Ahmed N, et al. Comparative prognostic utility of indexes of microvascular function alone or in combination in patients with an acute ST-segment elevation myocardial infarction. *Circulation* 2016;134:1833–47.
23. Fearon WF, Shah M, Ng M, et al. Predictive value of the index of microcirculatory resistance in patients with ST-segment elevation myocardial infarction. *J Am Coll Cardiol* 2008;51:560–5.
24. Fearon WF, Low AF, Yong AS, et al. Prognostic value of the index of microcirculatory resistance measured after primary percutaneous coronary intervention. *Circulation* 2013;127:2436–41.
25. O'Gara PT, Kushner FG, Ascheim DD, et al., for the American College of Cardiology Foundation/American Heart Association Task Force on Practice Guidelines. 2013 ACCF/AHA guideline for the management of ST-elevation myocardial infarction: a report of the American College of Cardiology Foundation/American Heart Association Task Force on Practice Guidelines. *Circulation* 2013;127:e362–425.
26. Centers for Disease Control and Prevention. State-specific second hand smoke exposure and current cigarette smoking among adults—United

States 2008. *MMWR Morb Mortal Wkly Rep* 2009; 58:1232-5.

27. TIMI Study Group. The Thrombolysis in Myocardial Infarction (TIMI) trial. Phase I findings. *N Engl J Med* 1985;312:932-6.

28. Gibson CM, Cannon CP, Daley WL, et al. TIMI frame count: a quantitative method of assessing coronary artery flow. *Circulation* 1996;93:879-88.

29. Gibson CM, Karha J, Giugliano RP, et al., for the INTEGRITI Study Group. Association of the timing of ST-segment resolution with TIMI myocardial perfusion grade in acute myocardial infarction. *Am Heart J* 2004;147:847-52.

30. Kramer CM, Barkhausen J, Flamm SD, Kim RJ, Nagel E. Standardized cardiovascular magnetic resonance (CMR) protocols 2013 update. *J Cardiovasc Magn Reson* 2013;15:91.

31. Giri S, Chung YC, Merchant A, et al. Direct T2 quantification of myocardial edema in acute ischemic injury. *J Cardiovasc Magn Reson* 2009;11:56.

32. Verhaert D, Thavendiranathan P, Giri S, et al. Direct T2 quantification of myocardial edema in acute ischemic injury. *J Am Coll Cardiol Img* 2011; 4:269-78.

33. Kellman P, Arai AE, McVeigh ER, Aletras AH. Phase-sensitive inversion recovery for detecting myocardial infarction using gadolinium-delayed hyperenhancement. *Magn Reson Med* 2002;47: 372-83.

34. Flett AS, Hasleton J, Cook C, et al. Evaluation of techniques for the quantification of myocardial scar of differing etiology using cardiac magnetic resonance. *J Am Coll Cardiol Img* 2011;4:150-6.

35. Anderson LJ, Holden S, Davis B, et al. Cardiovascular T2-star (T2*) magnetic resonance for the early diagnosis of myocardial iron overload. *Eur Heart J* 2001;22:2171-9.

36. Eitel I, Desch S, Fuernau G, et al. Prognostic significance and determinants of myocardial salvage assessed by cardiovascular magnetic resonance in acute reperfused myocardial infarction. *J Am Coll Cardiol* 2010;55:2470-9.

37. Berry C, Kellman P, Mancini C, et al. Magnetic resonance imaging delineates the ischemic area at risk and myocardial salvage in patients with acute myocardial infarction. *Circ Cardiovasc Imaging* 2010;3:527-35.

38. Payne AR, Casey M, McClure J, et al. Bright-blood T2-weighted MRI has higher diagnostic accuracy than dark-blood short tau inversion recovery MRI for detection of acute myocardial infarction and for assessment of the ischemic area at risk and myocardial salvage. *Circ Cardiovasc Imaging* 2011;4:210-9.

39. Francone M, Bucciarelli-Ducci C, Carbone I, et al. Impact of primary coronary angioplasty delay on myocardial salvage, infarct size and microvascular damage in patients with ST-segment elevation myocardial infarction: insight from cardiovascular magnetic resonance. *J Am Coll Cardiol* 2009;54:2145-53.

40. Carrick D, Haig C, Rauhalmi S, et al. Pathophysiology of LV remodeling in survivors of STEMI: inflammation, remote myocardium and prognosis. *J Am Coll Cardiol Img* 2015;8:779-89.

41. Hicks KA, Tchong JE, Bockurt B, et al. 2014 ACC/AHA key data elements and definitions for

cardiovascular endpoints events in clinical trials: a report of the American College of Cardiology/American Heart Association Task Force on Clinical Data Standards (Writing Committee to Develop Cardiovascular Endpoints Data Standards). *J Am Coll Cardiol* 2015;66:403-69.

42. Symons R, Pontone G, Schwitzer J, et al. Long-term incremental prognostic value of cardiovascular magnetic resonance after ST-segment elevation myocardial infarction: a study of the collaborative registry on CMR in STEMI. *J Am Coll Cardiol Img* 2018;11:813-25.

43. de Lemos JA, Morrow DA, Sabatine MS, et al. Association between plasma levels of monocyte chemoattractant protein-1 and long-term clinical outcomes in patients with acute coronary syndromes. *Circulation* 2003;107:690-5.

44. Lyngbakken MN, Skranes JB, de Lemos JA, et al. Impact of smoking on circulating cardiac troponin concentrations and cardiovascular events in the general population: the HUNT study (Nord-Trøndelag Health Study). *Circulation* 2016; 134:1962-72.

KEY WORDS cigarette smoking, magnetic resonance imaging, microcirculation, myocardial hemorrhage, myocardial infarction, prognosis

APPENDIX For supplemental methods and table, please see the online version of this article.